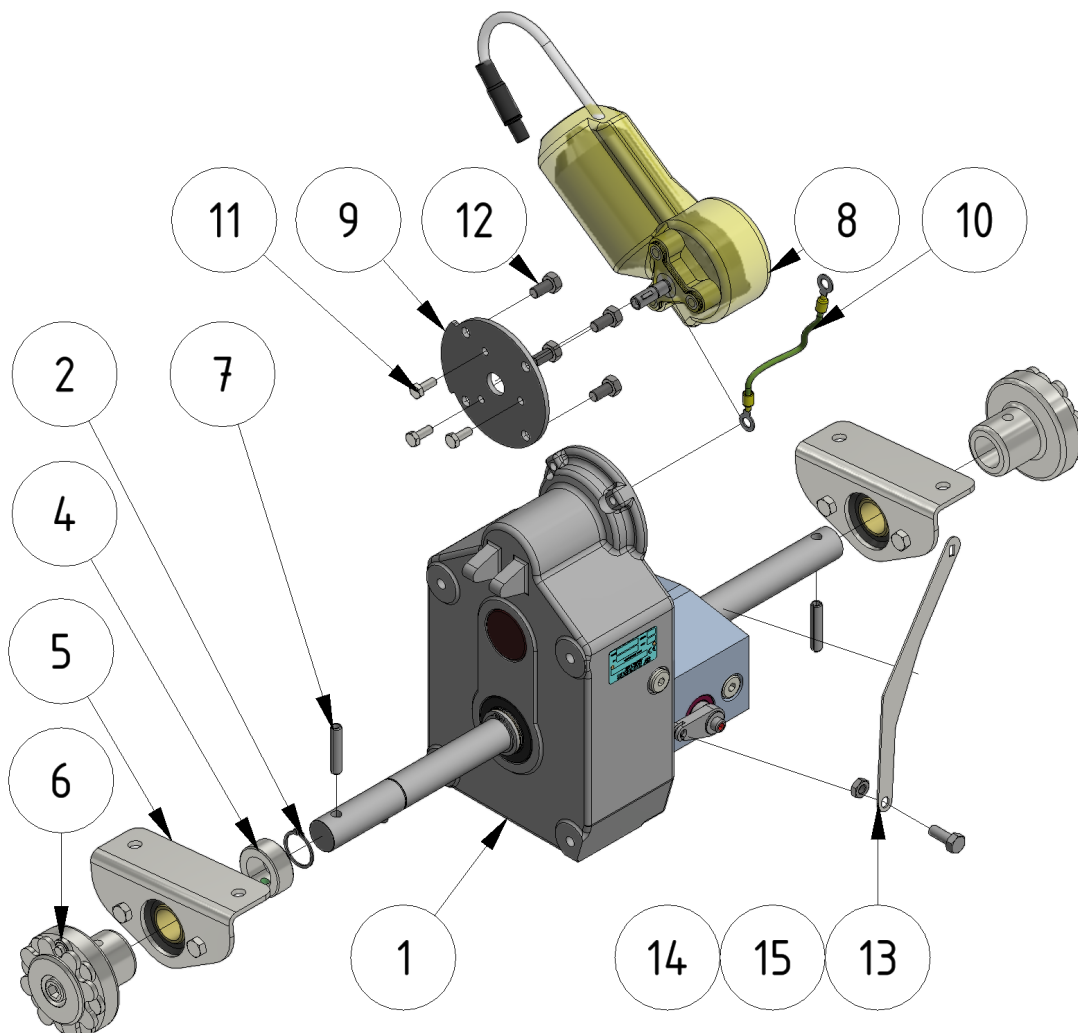


# Drive axle assembly

Part of [EVO Cleaner assembly 1 - 1109501](#)



| ITEM | DESCRIPTION            | PART NUMBER                | QTY |
|------|------------------------|----------------------------|-----|
| 1    | Gearbox                | <a href="#">+ 93187752</a> | 1   |
| 2    | Lockring               | 941079                     | 1   |
| 4    | Stop ring 25 mm        | 931002                     | 1   |
| 5    | Wheel-bearing assambly | <a href="#">+ 1101199</a>  | 2   |
| 6    | Wheel-hub              | <a href="#">+ 1107040</a>  | 2   |
| 7    | Pin 8 x 40             | 941063                     | 2   |
| 8    | Motor 220 rpm, gen.2   | <a href="#">+ 909241</a>   | 1   |
| 9    | Adapter                | 401058                     | 1   |
| 10   | Ground cable           | <a href="#">+ 901145</a>   | 1   |

| ITEM | DESCRIPTION   | PART NUMBER | QTY |
|------|---------------|-------------|-----|
| 11   | Screw M6 x 16 | 941006      | 3   |
| 12   | M8 x 16       | 941101      | 4   |
| 13   | Rod           | 159206      | 1   |
| 14   | Screw M8 x 20 | 941019      | 1   |
| 15   | Nut M8        | 941017      | 1   |

From:  
<https://wiki.envirologic.se/> - **Envirologic Support Wiki**

Permanent link:  
<https://wiki.envirologic.se/doku.php/service:spl:1109523-1?rev=1601208808>

Last update: **2020/09/27 05:13**

