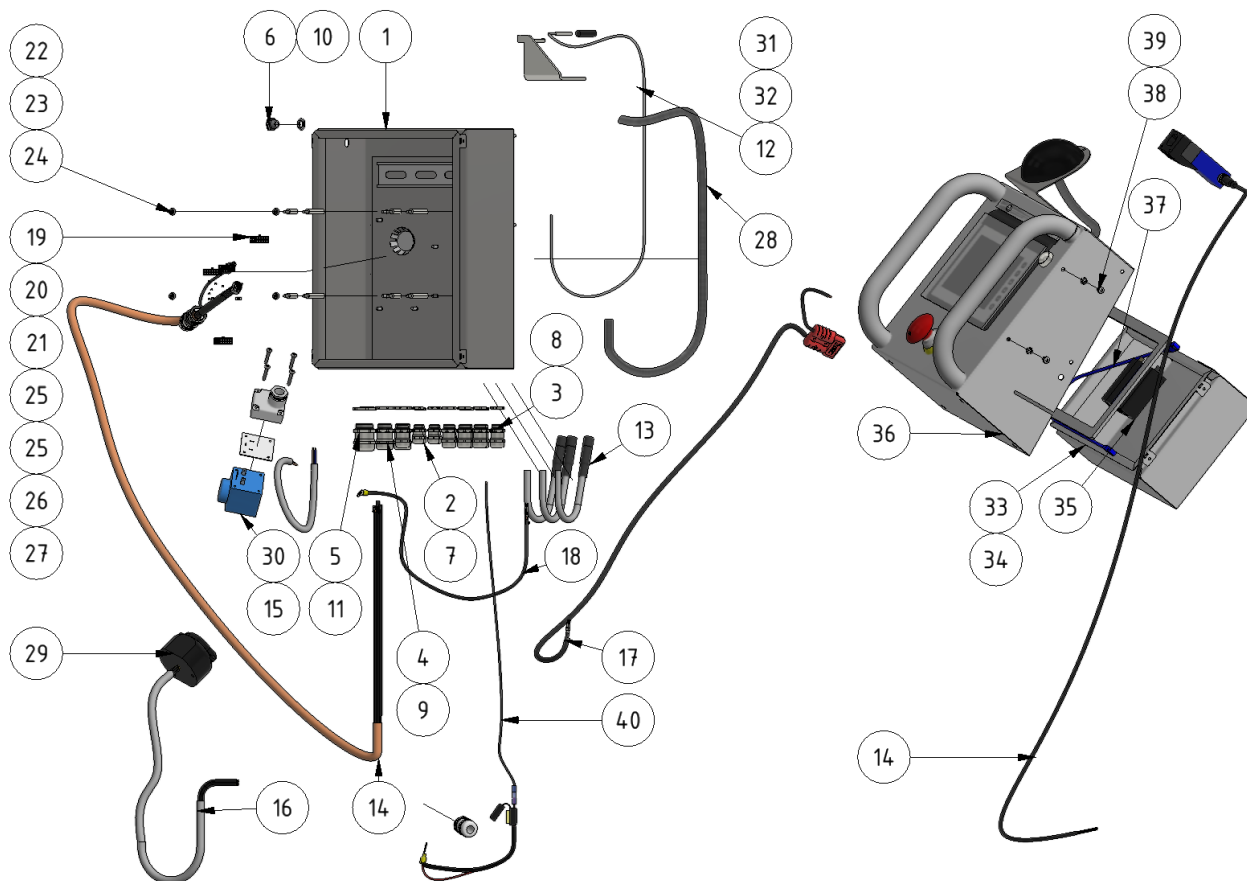








Junction box assembly

Part of [EVO Cleaner assembly 1 - 1109501](#)



| ITEM | DESCRIPTION | PART NUMBER | QTY |
|------|-------------------------|---|-----|
| 1 | Junction box | 1101222 | 1 |
| 2 | Cable gland M12 | 981016 | 5 |
| 3 | Cable gland M16 | 981017 | 8 |
| 4 | Cable gland M20 | 981018 | 2 |
| 5 | Cable gland M25 | 981019 | 1 |
| 6 | Skin-Top | 901114 | 1 |
| 7 | Nut M12 | 981013 | 5 |
| 8 | Nut M16 | 981020 | 8 |
| 9 | Nut M20 | 981021 | 2 |
| 10 | Nut M12 PVC | 981013 | 1 |
| 11 | Nut M25 | 981022 | 1 |
| 12 | Magnetic switch | 981023 | 1 |
| 13 | Cable M2-M3 | 901133 | 3 |
| 14 | Cable OP Box |  989209M | 1 |
| 15 | Cable water valve | 981025 | 1 |
| 16 | Cable trailer connector | 909235 | 1 |

| ITEM | DESCRIPTION | PART NUMBER | QTY |
|------|-------------------------------------|--|-----|
| 17 | Charging assembly |  909232 | 1 |
| 18 | Battery cable | 45226M | 1 |
| 19 | Crimp female | 901169 | 6 |
| 20 | Cable connector 1.5 mm ² | 45313 | 3 |
| 21 | Connector-protector | 907077 | 1 |
| 22 | Spacer screw 40 mm | 941000 | 4 |
| 23 | Spacer screw 20 mm | 941001 | 4 |
| 24 | Nut M4 | 941098 | 4 |
| 25 | Molex 16 | 981164 | 2 |
| 26 | Molex 14 | 981165 | 1 |
| 27 | Molex 12 | 989208 | 1 |
| 28 | Magnetic switch | 981023 | 1 |
| 29 | Trailer socket | 951007 | 1 |
| 30 | Coil, complete |  1101100-1 | 1 |
| 31 | Shrink tube 9 mm | 45518 | 1 |
| 32 | Joint magnet | 401091 | 1 |
| 33 | OP box | 109207 | 1 |
| 34 | Gasket OP box | 1409236 | 1 |
| 35 | Router |  989228 GLOBAL | 1 |
| 36 | Panel assembly |  1109516 | 1 |
| 37 | Network cable 500 | 989238 | 1 |
| 38 | Screw M5 x 8 | 941035 | 4 |
| 39 | Washer M5 teeth | 941087 | 4 |
| 40 | Ground cable, with fuse |  1109533 | 1 |

From:

<https://wiki.envirologic.se/> - **Envirologic Support Wiki**

Permanent link:

<https://wiki.envirologic.se/doku.php/service:spl:1109529-1?rev=1601212413>Last update: **2020/09/27 06:13**