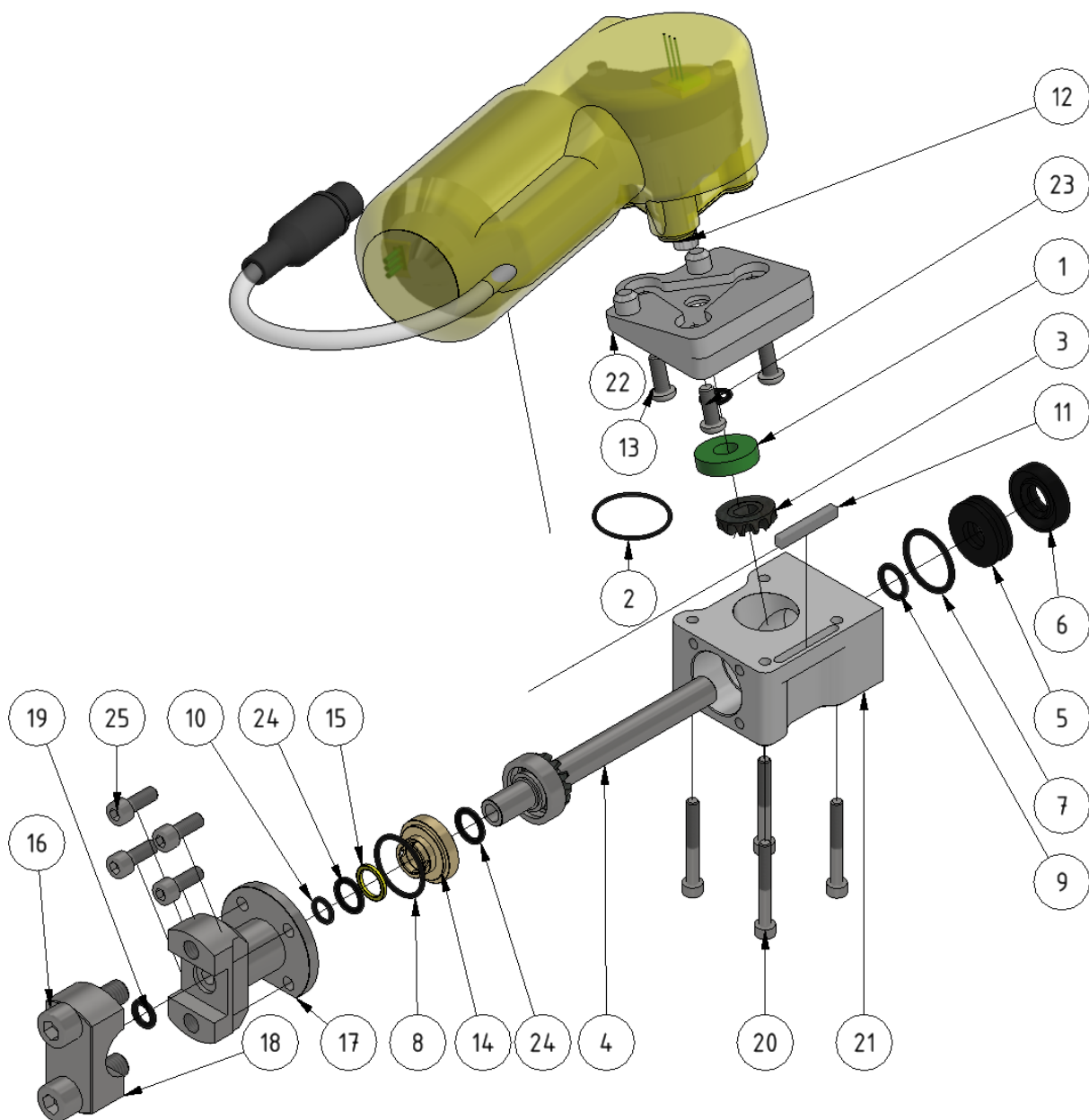


Rotary nozzle gear Gen2

Part number: 909242

Part of [Arm assembly](#)



ITEM	DESCRIPTION	PART NUMBER	QTY
1	Bearing	1409704	1
2	O-ring 29 x 1,5 NBR 70	969702	1
3	Tooth wheel	911010	1
4	Axle	1101122	1
5	Sealing	937002	1
6	Sealing 12 x 28 x 7 NBR 70	931007	1

ITEM	DESCRIPTION	PART NUMBER	QTY
7	O-ring 23,5 x 2,4 NBR 70	961116	1
8	O-ring 24 x 2,0 NBR 70	961042	1
9	O-ring 11,3 x 2,4 NBR 70	967002	1
10	O-ring 8 x 2,0 NBR 90	961025	1
11	Magnet	904011	1
12	Motor 70 rpm, D-profile	909242	1
13	M6x16	941060	3
14	Bearing	709714	1
15	Spacer 2x16x1,3	969703	1
16	M10x30	949701	2
17	Swivel house	709716	1
18	Cover	709717	1
19	O-ring 8 x 2,5	969704	1
20	M10x40	949702	4
21	House	709713	1
22	Adapter	709715	1
23	O-ring 2,0 x 9,5 NBR70	961118	1
24	O-ring 11,3 x 2,4 NBR 90	961026	2
25	Insex M6 x 16	941100	4

From:

<https://wiki.envirologic.se/> - **Envirologic Support Wiki**

Permanent link:

<https://wiki.envirologic.se/doku.php/service:spl:909242-2?rev=1627555675>

Last update: **2021/07/29 03:47**

