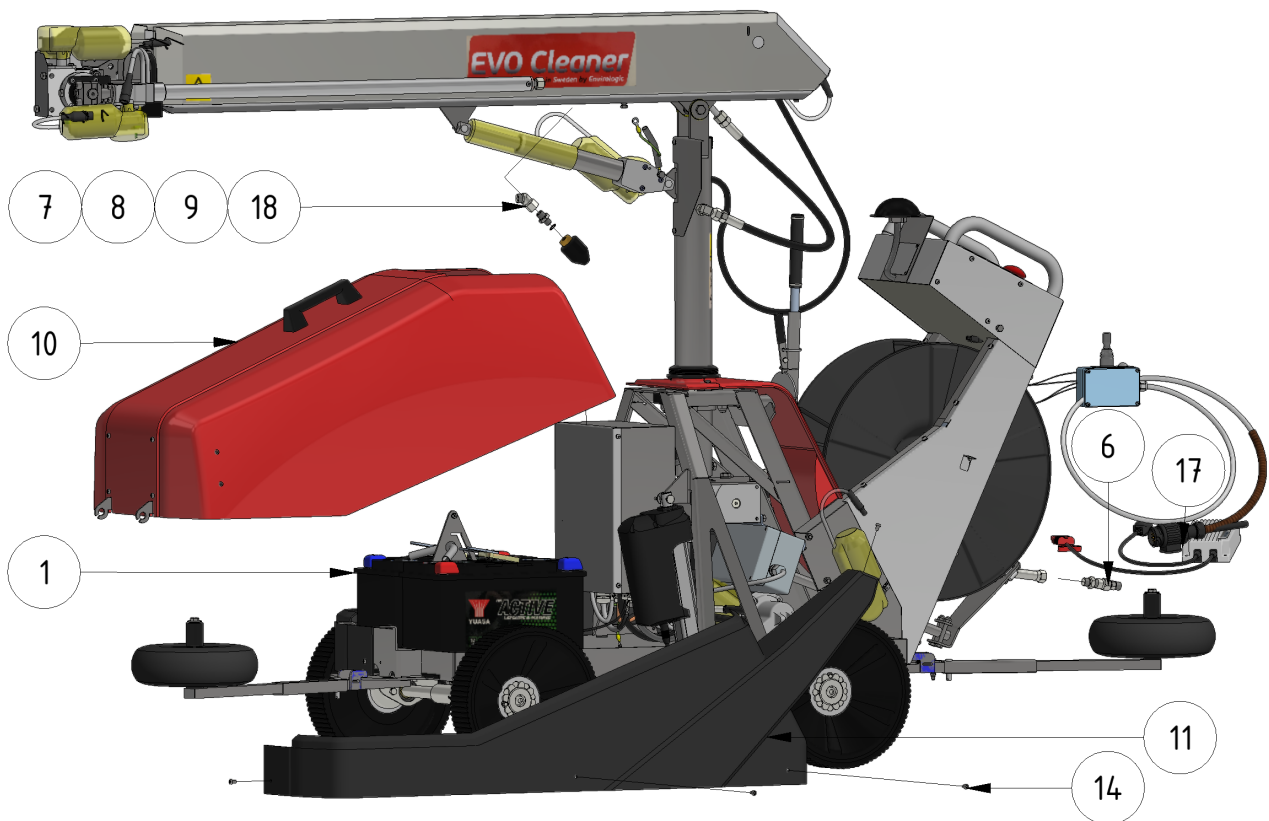
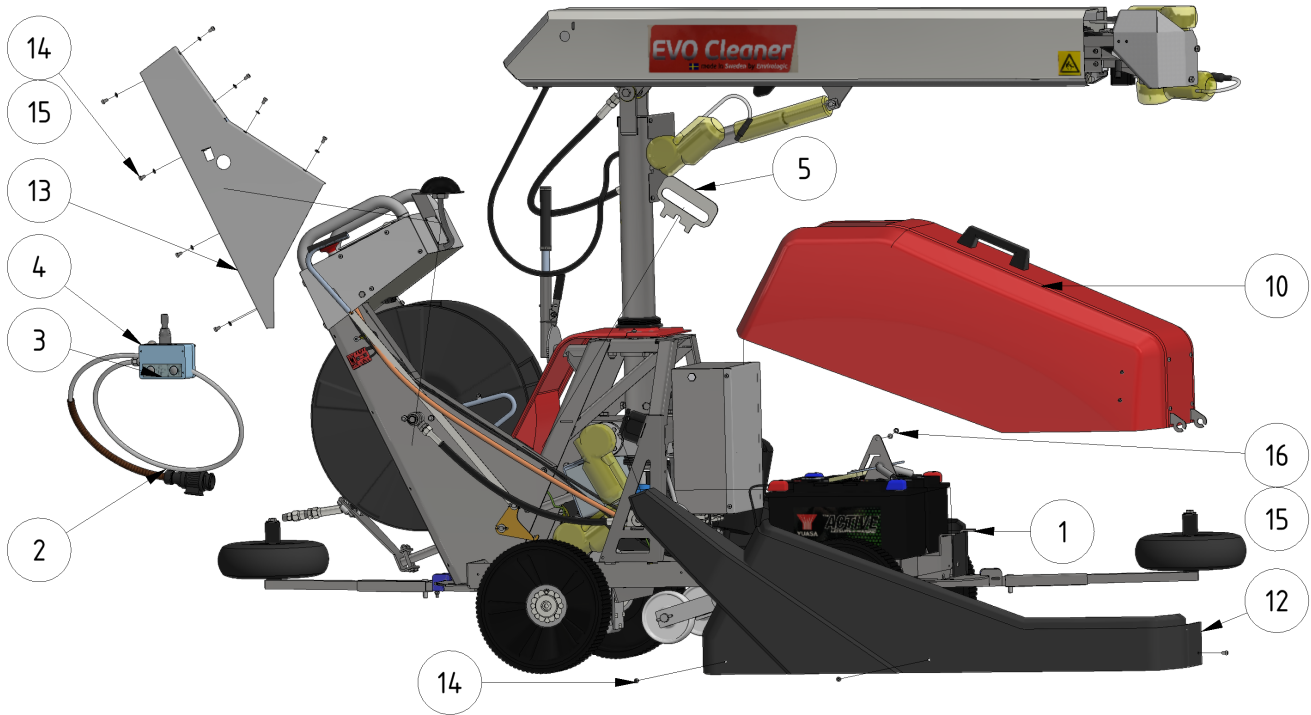


Exploded views

Here you can find the exploded views of the robot, if you need a spare part for the robot just press on the links below and make your way to find what you need

EVO Cleaner






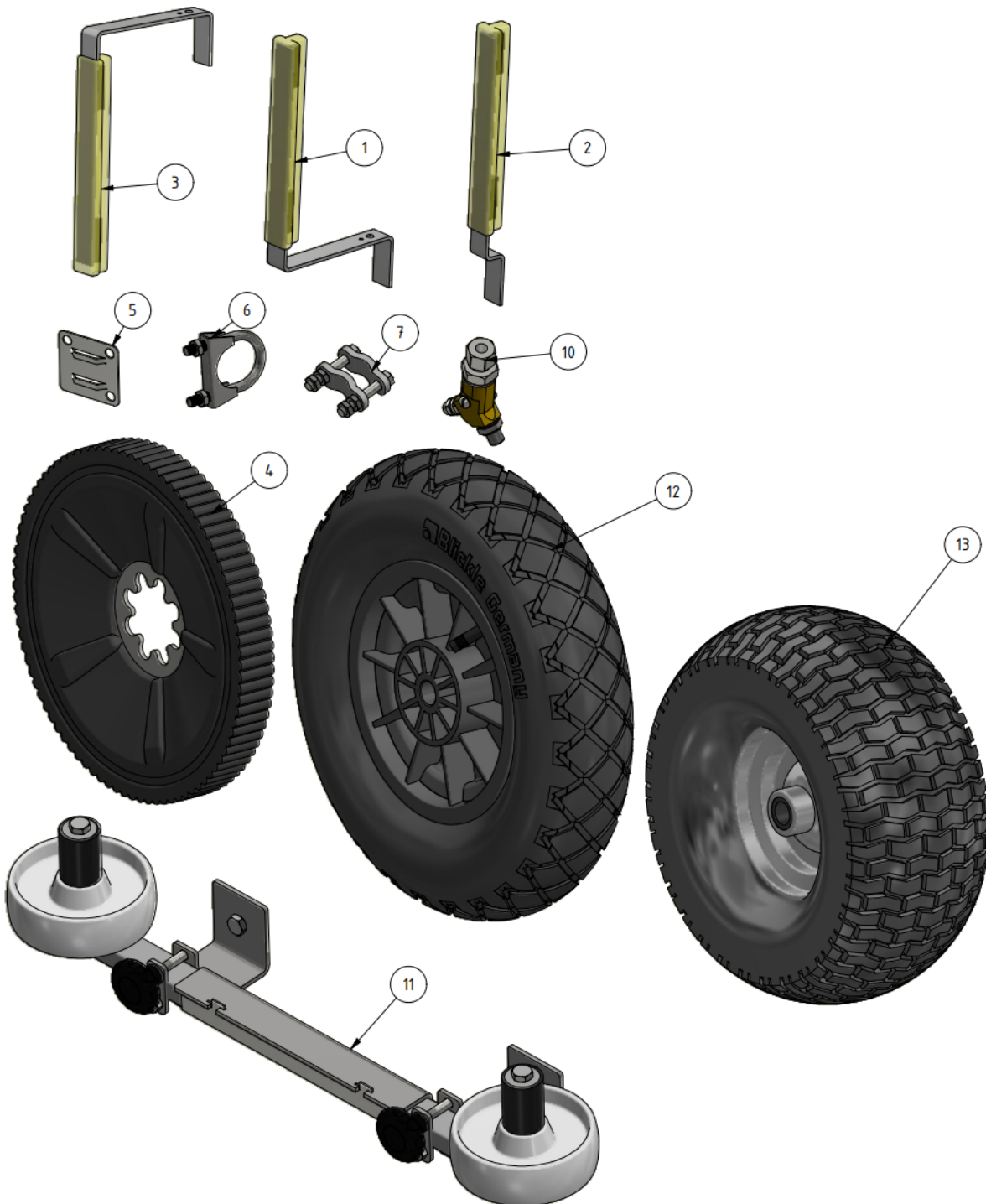
Shortcuts


- [EVO Cleaner 1st level main assembly - 1109501](#)
- [EVO Cleaner 2nd level main assembly - 1109502](#)
- [EVO Cleaner 3rd level main assembly - 1109503](#)
- [Gearbox tower assembly - 1109524](#)
- [Drive axle assembly - 1109523](#)
- [Telescope assembly - 1109708](#)
- [Arm assembly - 1109710](#)
- [Junction box assembly - 1109529](#)
- [Hose reel drive unit - 1109515](#)

| ITEM | DESCRIPTION | PART NUMBER | QTY |
|------|----------------------------|-------------------------|-----|
| 1 | EVO Cleaner assembly 4 | 1109500 | 1 |
| 2 | Joystick | 10020 | 1 |
| 3 | Sign joystick ENG | 901144-05 | 1 |
| 4 | Sign joystick ENG | 901144-05 | 1 |
| 5 | Wheel tool | 407033 | 1 |
| 6 | Water strainer/filter | 1105006 | 1 |
| 7 | Rotary nozzle 0.55 | 901112 | 1 |
| 8 | Tredo washer 1/4 stainless | 961041RF | 1 |
| 9 | Adapter 12 - 1/4" | 961021RF | 1 |
| 10 | Hood | 1109514 | 1 |
| 11 | Left cover | 1409234 | 1 |
| 12 | Right cover | 1409235 | 1 |
| 13 | Right lid | 1109217 | 1 |

| ITEM | DESCRIPTION | PART NUMBER | QTY |
|------|----------------------|-----------------------------------------------------------------------------------------------|-----|
| 14 | Screw M6 x 10 | 941007 | 16 |
| 15 | Spring Washer M6 | 941045 | 9 |
| 16 | Nut M6 | 941002 | 1 |
| 17 | Charger 24/12 230V |  10051 compl | 1 |
| 18 | Angle 135° stainless | 961045RF | 1 |

Accessories



| ITEM | DESCRIPTION | PART NUMBER |
|------|--------------------------------------------------------------------------------------------------------------------|-------------------------|
| 1 | Marker, S shape | 32030 |
| 2 | Marker, S shape, short | 32026 |
| 3 | Marker, U shape | 32040 |
| 4 | Flex-wheel 35 mm | 977031 |
| 5 | Marker bracket | 30000 |
| 6 | Tube-clamp 35 mm | 30010 |
| 7 | Clamp | 30021 |
| 10 | Double nozzle / Shift-head valve  | 1101201 |
| 11 | Corner wheels | 1109551 |
| 12 | Guidance wheel , 400 mm | 979201 |
| 13 | Guidance wheel , high | 10003 |

From:
<https://wiki.envirologic.se/> - **Envirologic Support Wiki**

Permanent link:
https://wiki.envirologic.se/doku.php/service:spl:spare_parts_list_rev2?rev=1684931880

Last update: **2023/05/24 05:38**

