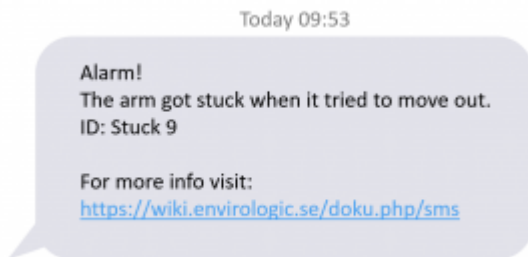


SMS

On the Internet screen, a mobile phone number can be entered in order to receive SMS messages from the robot. There are mainly 2 types of SMS messages that are sent from the robot: alarms and finished.

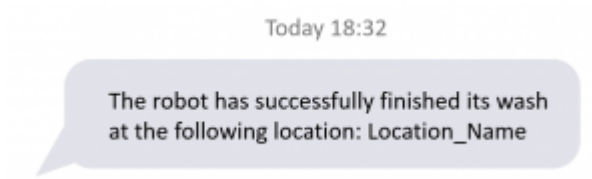
Alarm SMS



The information given in an alarm SMS is the following:

- Alarm type, can be any of the following:
 - [First marker not found](#)
 - [Robot stuck](#), the code shows motor and direction:
 - 0 = [any](#)
 - 1 = boom up
 - 2 = boom down
 - 3 = tower right
 - 4 = tower left
 - 5 = robot backward
 - 6 = robot forward
 - 7 = telescope out
 - 8 = telescope in
 - 9 = arm out
 - 10 = arm in
 - 11 = nozzle clockwise
 - 12 = nozzle counter-clockwise
 - [Control system error](#)
 - [Hose stuck](#)
 - Pressure fault, the code shows how:
 - 1 = [too high](#)
 - 2 = [too low](#)
 - [Ongoing run aborted](#)
 - Battery low, the code shows when:
 - 1 = [active](#)
 - 2 = [idle](#)

Finished SMS



The information given in a finished SMS is the following:

- Finished location message
- Name of the location

Test SMS

A test SMS triggered from the Internet screen looks like this:



- Test message
- SIM card identification number

From:
<https://wiki.envirologic.se/> - **Envirologic Support Wiki**

Permanent link:
<https://wiki.envirologic.se/doku.php/sms?rev=1645009195>

Last update: **2022/02/16 02:59**

